



Treasure Chest Throw

The classic beauty of an Aran knit throw makes it the perfect gift for the bride or other special remembrance. This timeless design is at home in any room.

LW2709



Throw measures 47" wide x 54" long.

RED HEART® Super Saver®: 7 skeins 313 Aran
Or
RED HEART® Super Saver® Jumbo: 4 skeins 313 Aran

Knitting Needles: 5.5mm [US 9].
Cable needle, stitch markers, yarn needle

GAUGE: 14 sts = 4"; 22 rows = 4" in Stockinette stitch (knit on Right Side, purl on Wrong Side); 31 sts = 6"; 22 rows = 4" in End Cable Strip pattern; 26 sts = 5½"; 22 rows = 4" in Cable Strip pattern; 25 sts = 8"; 36 rows = 6½" in Diamond Strip pattern. **CHECK YOUR GAUGE. Use any size needles to obtain the gauge.**

Special Stitches

1/2 RC = 1 over 2 Right Cross – Slip next 2 sts to cable needle and hold in back, k1, then k2 from cable needle.

4/4 RC = 4 over 4 Right Cross – Slip next 4 sts to cable needle and hold in back, k4, then k4 from cable needle.

Notes

1. Throw is made from 7 strips; 2 End Cable Strips, 3 Diamond Strips, and 2 Cable Strips.
2. Strips can be worked by reading written instructions, or following charts.
3. Row gauges must be accurate to ensure that all strips are the same length.

RIGHT END CABLE STRIP

Cast on 31 sts.

Row 1 (Right Side): K5, p3, 1/2 RC, p3, k8, p3, 1/2 RC, p3.

Row 2: K2, (k1, p1, k1) in next st, p3, (k1, p1, k1) in next st, k2, p8, k2, (k1, p1, k1) in next st, p3, (k1, p1, k1) in next st, k7—39 sts.

Row 3: K5, p5, k3, p5, k8, p5, k3, p5.

Row 4: K2, p3tog, p3, p3tog, k2, p8, k2, p3tog, p3, p3tog, k7—31 sts.

Rows 5 and 6: Repeat Rows 1 and 2.

Row 7: K5, p5, k3, p5, 4/4 RC, p5, k3, p5.

Row 8: Repeat Row 4.

Rows 9–12: Repeat Rows 1–4.

Rows 13–288: Repeat Rows 1–12 twenty-three more times. Bind off. Place marker in top edge.

LEFT END CABLE STRIP

Cast on 31 sts.

Row 1 (Right Side): P3, 1/2 RC, p3, k8, p3, 1/2 RC, p3, k5.

Row 2: K7, (k1, p1, k1) in next st, p3, (k1, p1, k1) in next st, k2, p8, k2, (k1, p1, k1) in next st, p3, (k1, p1, k1) in next st, k2—39 sts.

Row 3: P5, k3, p5, k8, p5, k3, p5, k5.

Row 4: K7, p3tog, p3, p3tog, k2, p8, k2, p3tog, p3, p3tog, k2—31 sts.

Rows 5 and 6: Repeat Rows 1 and 2.

Row 7: P5, k3, p5, 4/4 RC, p5, k3, p5, k5.

Row 8: Repeat Row 4.

Rows 9–12: Repeat Rows 1–4.

Rows 13–288: Repeat Rows 1–12 twenty-three more times. Bind off. Place marker in top edge.





CABLE STRIP (make 2)

Cast on 26 sts.

Row 1 (Right Side): P3, 1/2 RC, p3, k8, p3, 1/2 RC, p3.

Row 2: K2, (k1, p1, k1) in next st, p3, (k1, p1, k1) in next st, k2, p8, k2, (k1, p1, k1) in next st, p3, (k1, p1, k1) in next st, k2—34 sts.

Row 3: P5, k3, p5, k8, p5, k3, p5.

Row 4: K2, p3tog, p3, p3tog, k2, p8, k2, p3tog, p3, p3tog, k2—26 sts.

Rows 5 and 6: Repeat Rows 1 and 2.

Row 7: P5, k3, p5, 4/4 RC, p5, k3, p5.

Row 8: Repeat Row 4.

Rows 9–12: Repeat Rows 1–4.

Rows 13–288: Repeat Rows 1–12 twenty-three more times.

Bind off. Place marker in top edge.

DIAMOND STRIP (make 3)

Cast on 25 sts.

Row 1 (Right Side): Knit.

Row 2: P12, (k1, p1, k1) in next st, p12—27 sts.

Row 3: K12, p3, k12.

Row 4: P11, (k1, p1, k1) in next st, p3tog, (k1, p1, k1) in next st, p11—29 sts.

Row 5: K11, p7, k11.

Row 6: P10, (k1, p1, k1) in next st, [p3tog, (k1, p1, k1) in next st] twice, p10—31 sts.

Row 7: K10, p11, k10.

Row 8: P9, (k1, p1, k1) in next st, [p3tog, (k1, p1, k1) in next st] 3 times, p9—33 sts.

Row 9: K9, p15, k9.

Row 10: P8, (k1, p1, k1) in next st, [p3tog, (k1, p1, k1) in next st] 4 times, p8—35 sts.

Row 11: K8, p19, k8.

Row 12: P7, (k1, p1, k1) in next st, [p3tog, (k1, p1, k1) in next st] 5 times, p7—37 sts.

Row 13: K7, p23, k7.

Row 14: P6, (k1, p1, k1) in next st, [p3tog, (k1, p1, k1) in next st] 6 times, p6—39 sts.

Row 15: K6, p27, k6.

Row 16: P5, (k1, p1, k1) in next st, [p3tog, (k1, p1, k1) in next st] 7 times, p5—41 sts.

Row 17: K5, p31, k5.

Row 18: P4, (k1, p1, k1) in next st, [p3tog, (k1, p1, k1) in next st] 8 times, p4—43 sts.

Row 19: K4, p35, k4.

Row 20: P4, p3tog, [(k1, p1, k1) in next st, p3tog] 8 times, p4—41 sts.

Row 21: K5, p31, k5.

Row 22: P5, p3tog, [(k1, p1, k1) in next st, p3tog] 7 times, p5—39 sts.

Row 23: K6, p27, k6.

Row 24: P6, p3tog, [(k1, p1, k1) in next st, p3tog] 6 times, p6—37 sts.

Row 25: K7, p23, k7.

Row 26: P7, p3tog, [(k1, p1, k1) in next st, p3tog] 5 times, p7—35 sts.

Row 27: K8, p19, k8.

Row 28: P8, p3tog, [(k1, p1, k1) in next st, p3tog] 4 times, p8—33 sts.

Row 29: K9, p15, k9.

Row 30: P9, p3tog, [(k1, p1, k1) in next st, p3tog] 3 times, p9—31 sts.

Row 31: K10, p11, k10.

Row 32: P10, p3tog, [(k1, p1, k1) in next st, p3tog] twice, p10—29 sts.

Row 33: K11, p7, k11.

Row 34: P11, p3tog, (k1, p1, k1) in next st, p3tog, p11—27 sts.

Row 35: K12, p3, k12.

Row 36: P12, p3tog, p12—25 sts.

Rows 37–288: Repeat Rows 1–36 seven more times.

Bind off. Place marker in top edge.

FINISHING

With Right Sides facing arrange strips, with long edges together, as follows: Left End Cable Strip, Diamond Strip, Cable Strip, Diamond Strip, Cable Strip, Diamond Strip, Right End Cable Strip. Sew long edges of strips together.

Border

With Right Side facing, beginning at corner to work across short edge (top), pick up and k177 sts evenly spaced across short edge.

Work in Garter st (knit every row) for 9 more rows.

Bind off loosely. Repeat across other short edge (bottom).

Weave in ends.



RED HEART® Super Saver®, Art. E300 available in solid color 7 oz (198 g), 364 yd (333 m); multicolor, heather and print 5 oz (141 g), 244 yd (223 m), flecks 5 oz (141 g), 260 yds (238 m) skeins.

Or



RED HEART® Super Saver® Jumbo, Art. E302 available in solid color 14 oz, (396 g), 744 yd (681 m) and 10 oz multicolor (283 g), 482 yd (440 m) skeins

ABBREVIATIONS: k = knit; p = purl; p3tog = purl 3 stitches together; () = work directions in parentheses into same st.





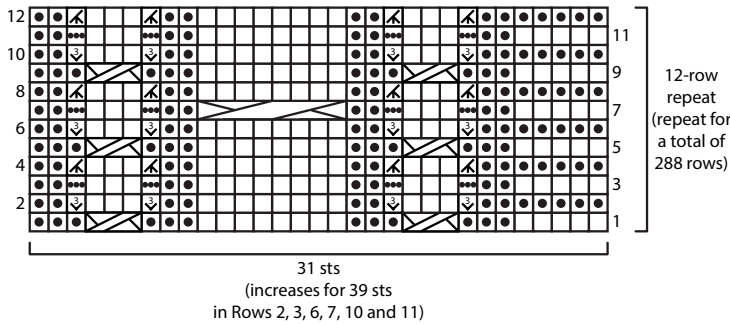
Cable



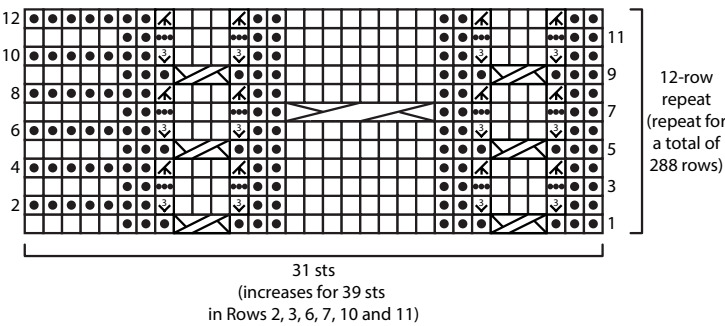
Diamond



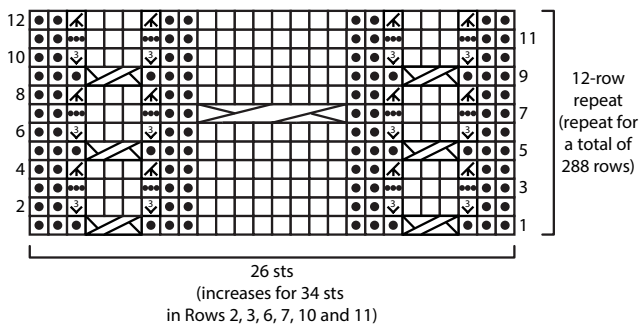
Right End Cable Strip pattern



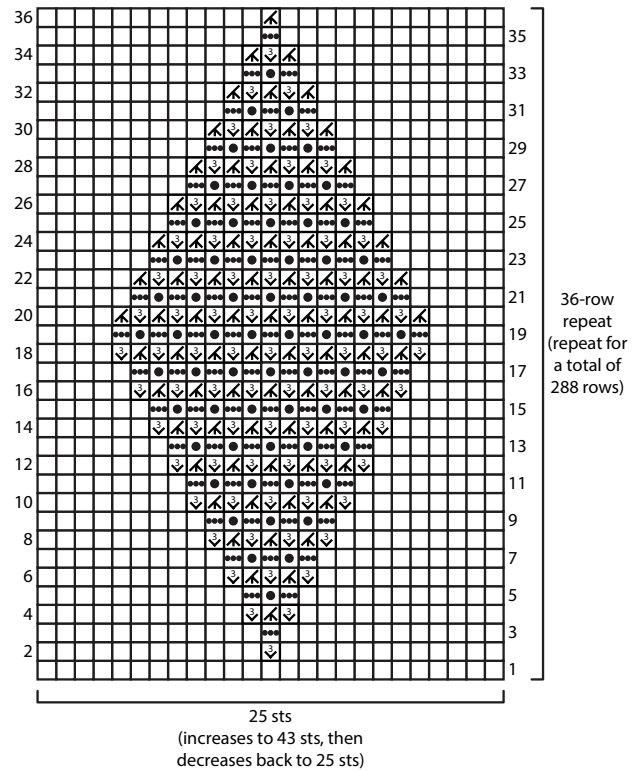
Left End Cable Strip pattern



Cable Strip pattern



Diamond Strip pattern



KEY

- k on Right Side, p on Wrong Side
- p on Right Side, k on Wrong Side
- p3tog on Wrong Side
- (k1, p1, k1) in same st (on Wrong Side, increase)
- purl each of the 3 sts of the increase
- 4/4 RC: Slip 4 sts to cable needle and hold in back, k4, then k4 from cable needle
- 1/2 RC: Slip 2 sts to cable needle and hold in back, k1, then k2 from cable needle

